

# SPC Gear GK550 Omnis Keyboard

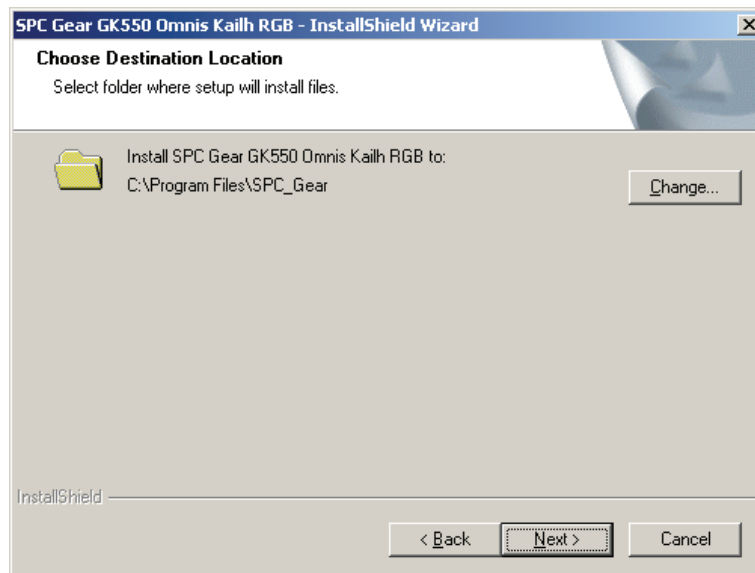
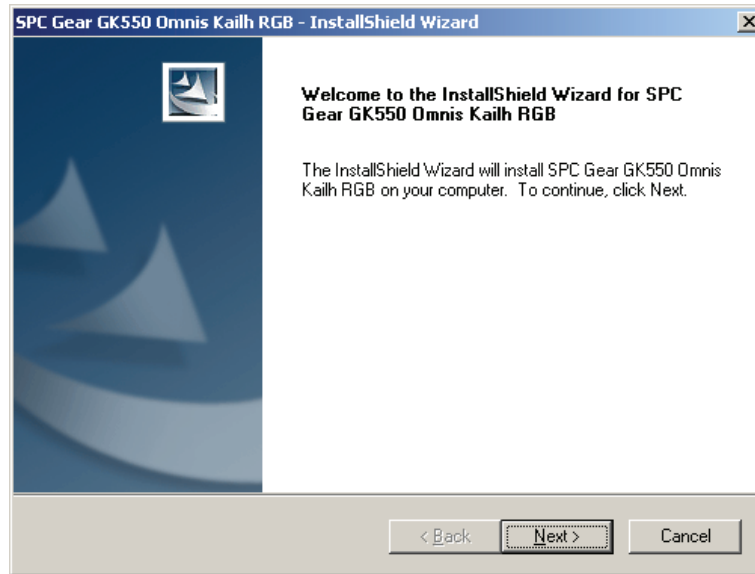


## SOFTWARE INSTALLATION

1. Plug the device in to the USB socket.
2. Download the internal driver update and software installation wizard.
3. Start the downloaded driver update "1 - GK550 keyboard upgrade.exe", follow instructions on the screen, and restart your computer.

The possibility of manual switching user modes is lost after installing the driver. It is now only possible through the software.

4. Run the installation file "2 - GK550 software.exe", follow instructions on the screen, and restart your computer.



# SPC Gear GK550 Omnis Keyboard



## KEY EXPLANATIONS



1. Switch between lighting adjustments and key settings.
2. Lighting profile switch.
3. Lighting brightness switch.
4. Lighting speed switch (function unavailable in the following modes: 6, 16, 17, 18, and in user mode).
5. Lighting direction switch (function available only in the following modes: 1, 2, 3).
6. Profile selection.
7. Macro settings.
8. Fixed Lighting color selection (function only available in user mode or with RGB lighting option turned off).
9. Other keys lighting color selection (function only available in user mode).
10. User mode selection.
11. Lighting preview.
12. USB sampling rate switch.
13. Restore default settings.

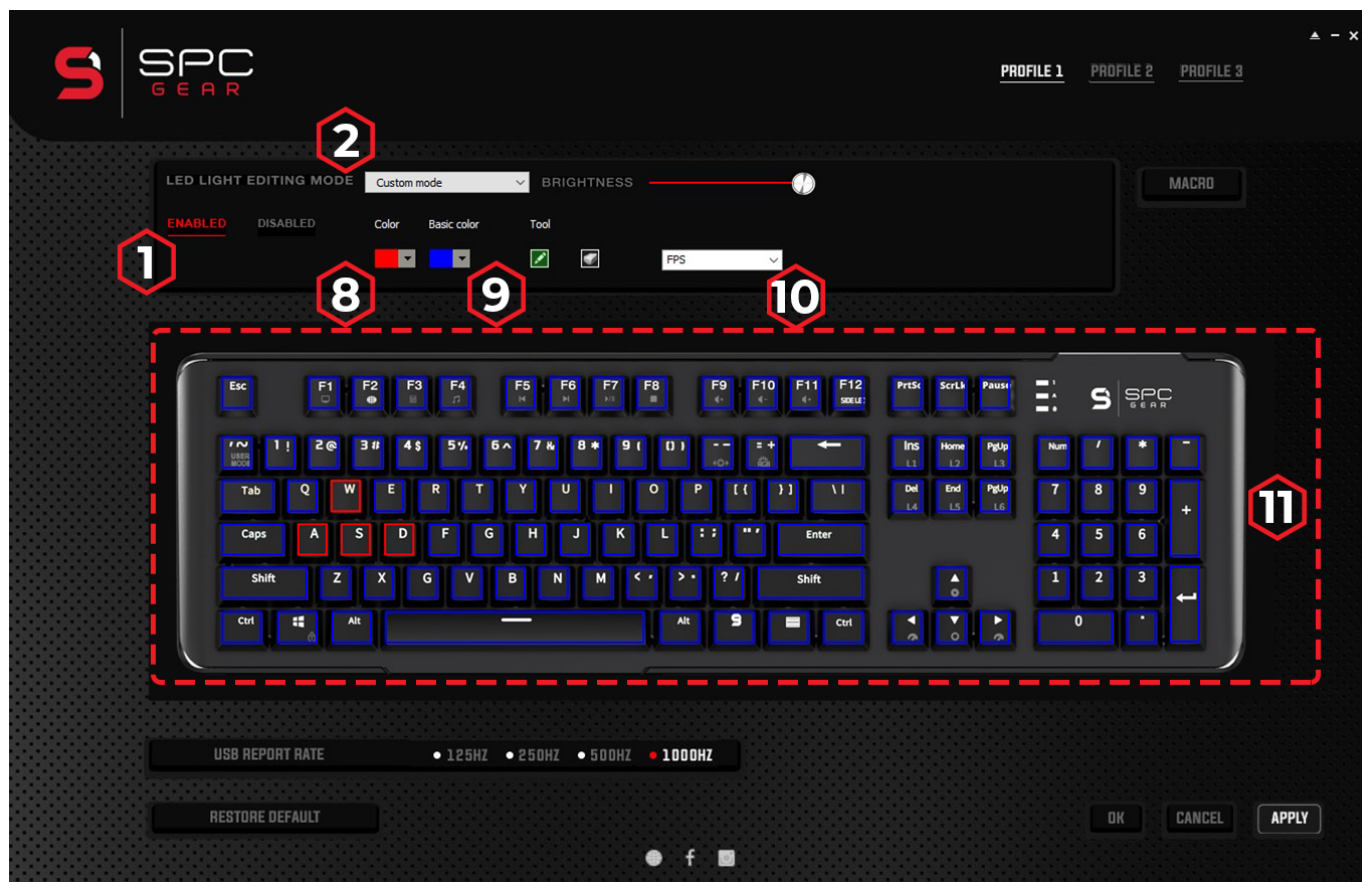
## ADJUSTING LIGHTING PROFILE

1. Move to lighting mode edit section ①.
2. Select desired mode from the drop-down list ②.
3. Set brightness ③, speed ④, and direction ⑤ of lighting.
4. Confirm settings with the APPLY button.

# SPC Gear GK550 Omnis Keyboard



## ADDING NEW LIGHTING MODE



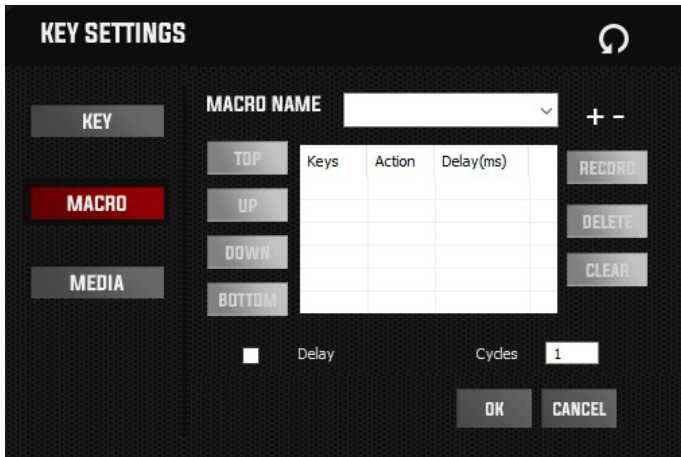
1. Move to lighting mode edit section ①.
2. Select 'User mode' from the drop-down list ②.
3. To set the lighting choose the color ⑧ and click the desired keys on the preview panel using LMB ⑪.
4. You can quickly change the lighting of other keys with the "Others" ⑨ option.
5. In order to turn off the lighting set the color to black.
6. After preparing the desired configuration you can name it ⑩ and save the setting using the APPLY button.

# SPC Gear GK550 Omnis Keyboard



## ADDING MACROS


1. Enter macro editing mode by clicking MACROS button 

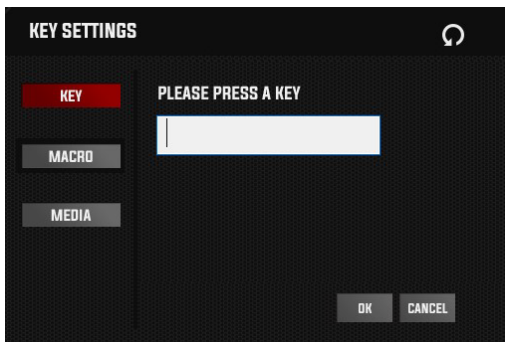


- + Add new macro.
- Delete macro.
- RECORD** Begin to record the macro sequence.
- ERASE** Delete selected macro step.
- CLEAR** Removing all macro steps.
- TOP** Move the selected step to the top of list.
- UP** Move the selected step up.
- DOWN** Move the selected step down.
- BOTTOM** Move the selected step to the bottom of list.
- DELAY** Include the delay when recording sequence.
- CYCLES** Amount of repeats.

2. To add a new macro click "+" and create a sequence.
3. After adding the sequence you can name it and confirm using the OK button.

## KEYS SETTING / MACRO ASSIGNING

1. To edit the keys setting quit the lighting adjustment mode .
2. Click the key you want to edit using LMB.



- KEY** Assign another function to the key.
- MACROS** Assign a macro to the key.
- MEDIA** Assign a media function to the key.

3. After selecting desired option click OK and APPLY buttons.

# SPC Gear GK550 Omnis Keyboard



## PROFILE SELECTION

Software allows saving settings on 3 different profiles, which helps you to quickly switch between previously saved options. The highlighted profile name (6) indicates which profile is currently active. All the settings are being saved on the keyboard memory, so that you can still use them when the device is plugged into another computer.

